

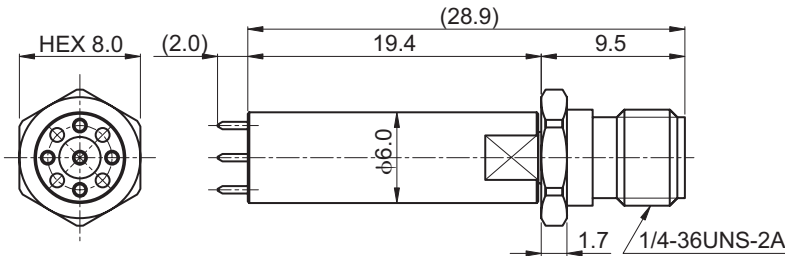


TDP21

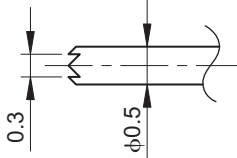
Coaxial Probes GND Type

Configuration, Dimensions

Unit:mm



Tip Shape



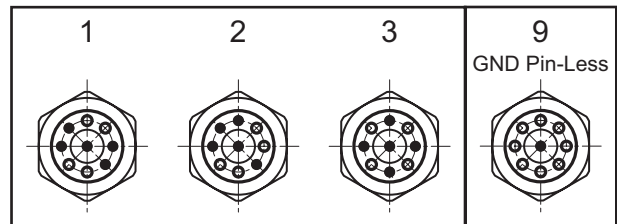
Tip Shape	for signals, for GND : 4-Point	
Material	BeCu	
Finish	Ground	Ni
	Surface	Au
Probe Pitch	for signals, for GND : 2.1 mm	

How to Code

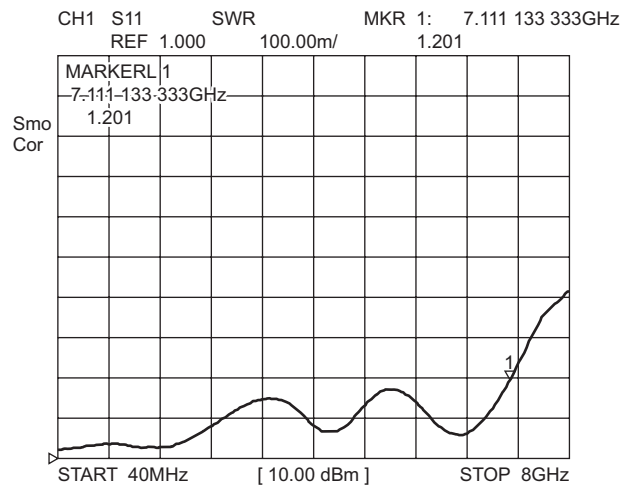
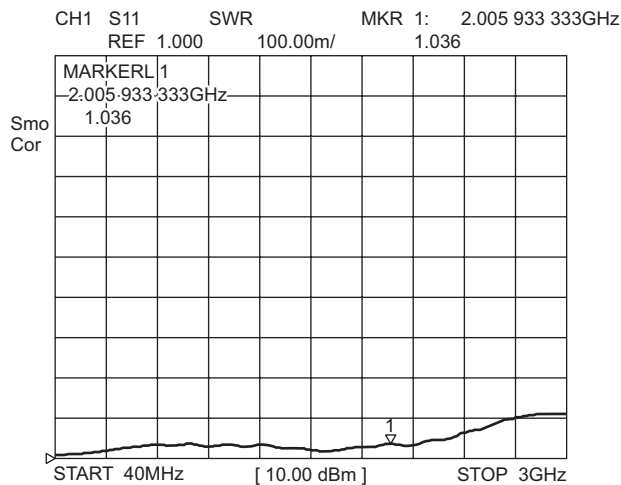
TDP21 - G6□00

GND Pin Position

Please specify from 1-3. When a GND pin is unnecessary, please specify 9. it complies with any of customers' requirements.



Typical Performance



Specifications of products are subject to change without notice.

e-tdp21_g6x00-p01-03



株式会社 **MKT TAISEI Co., Ltd.**

<< Head Office >> 5-16-2, Nishi-Ikebukuro, Toshima-ku, Tokyo, 171-0021, Japan.
PHONE : 81-3-3982-0029 FAX : 81-3-3986-1537 E-mail : info@mkt-taisei.com

<< Kansai Branch >> 3-18-9, Nishi-Nakajima, Yodogawa-ku, Osaka-City, 532-0011, Japan.
PHONE : 81-6-6390-7264 FAX : 81-6-6390-6945 E-mail : mkt-k@wonder.ocn.ne.jp

<http://www.mkt-taisei.co.jp/>