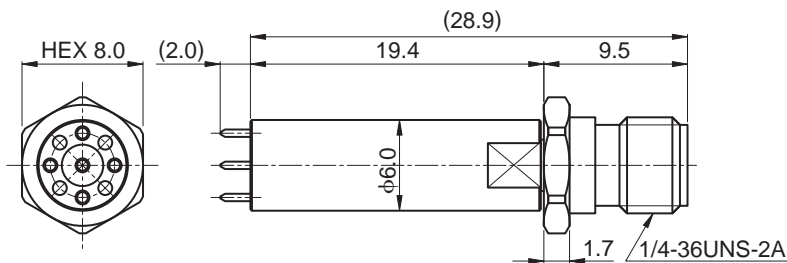




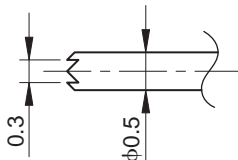
◆ TDP21 ◆ Coaxial Probes GND Type

Configuration, Dimensions

Unit:mm



◆ Tip Shape ◆



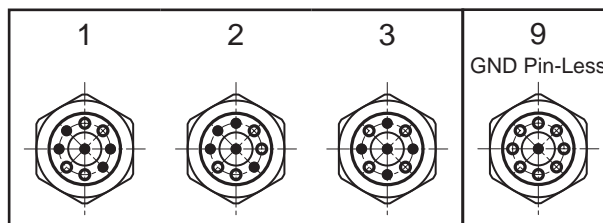
| | | |
|-------------|--------------------------------|----|
| Tip Shape | for signals, for GND : 4-Point | |
| Material | BeCu | |
| Finish | Ground | Ni |
| | Surface | Au |
| Probe Pitch | for signals, for GND : 2.1 mm | |

How to Code

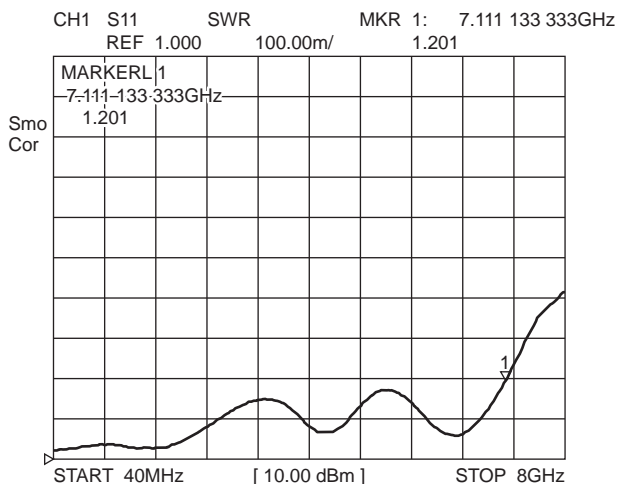
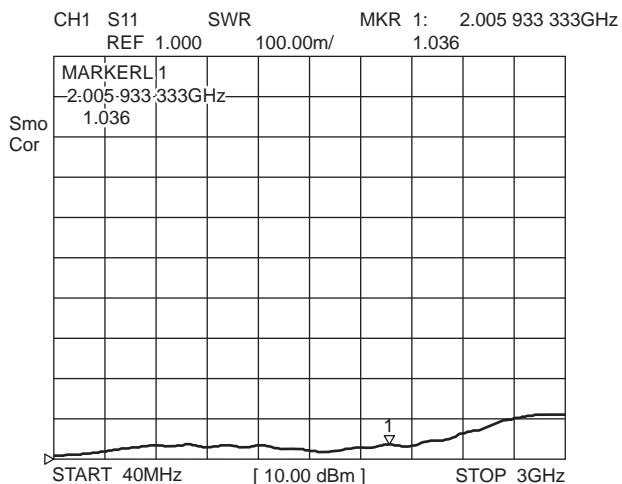
TDP21 - G6□00

GND Pin Position

Please specify from 1-3. When a GND pin is unnecessary, please specify 9. it complies with any of customers' requirements.



Typical Performance



⚠ Specifications of products are subject to change without notice.

e-tdp21_g6x00-p01-04



株式会社 **MKT TAISEI** **MKT TAISEI Co.,Ltd.**

<< Head Office >> 3-10-8, Nohagi 1st Bldg, Minami-Ikebukuro, Toshima-ku, Tokyo, 171-0022, Japan.

PHONE : 81-3-3982-0029 FAX : 81-3-3986-1537 E-mail : info@mkt-taisei.com

<< Kansai Branch >> 3-18-9, Nishi-Nakajima, Yodogawa-ku, Osaka-City, 532-0011, Japan.

PHONE : 81-6-6390-7264 FAX : 81-6-6390-6945 E-mail : mkt-k@wonder.ocn.ne.jp

<http://www.mkt-taisei.co.jp/>